

EXTERIOR PANEL ELEVATION
SCALE: 1 : 1

INTERIOR PANEL ELEVATION
SCALE: 1 : 1

TYPICAL NEMA 4X JUNCTION BOX

BILL OF MATERIAL				
ITEM	QTY	DESCRIPTION	MANUFACTURER	CATALOG NUMBER
1	AS REQ'D	NEMA 4X ENCL. CONTINUOUS-HINGE WITH CLAMPS, 152X152X102MM	HOFFMAN	A606CHNFSS
2	AS REQ'D	PANEL FOR ITEM 1	HOFFMAN	A6P6
3	AS REQ'D	LAMACOIDS	–	
4	AS REQ'D	35mm DIN RAIL	PHOENIX CONTACT	0801733
5	AS REQ'D	TERMINAL END CLAMP – CLIPFIX 35	PHOENIX CONTACT	3022218
6	AS REQ'D	FEED-THROUGH TERMINAL – UT 4-MTD	PHOENIX CONTACT	3046184
7	AS REQ'D	TERMINAL END PLATE – D-UT 2,5/4 TWIN	PHOENIX CONTACT	3047141
8	AS REQ'D	GROUND BAR, 6 TAPS	ILSCO	0167–6

JUNCTION BOX SCHEDULE		
IDENTIFIER	NUMBER OF TERMINALS	DESCRIPTION
JB–C6301	7	SUPPLY FAN SF–C630 DAMPER XV–C6301
JBA–C6701	7	SCRUBBER SCRB–C670 DAMPER XV–C6701
JBA–C6401	7	EXHAUST FAN EF–C640 DAMPER XV–C6401
JBA–C6411	7	EXHAUST FAN EF–C641 DAMPER XV–C6411
JBA–C6421	7	EXHAUST FAN EF–C642 DAMPER XV–C6421

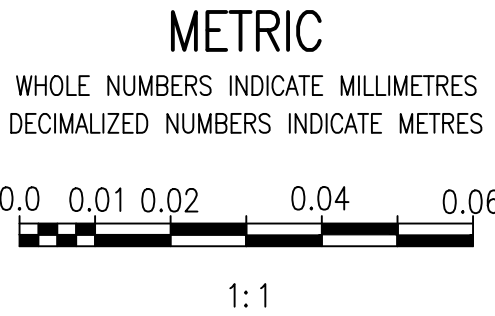
GENERAL NOTES:



- ALL POWER AND 120 VAC WIRING ARE TEW/MTW 300V, 105°C INSULATION, STRANDED COPPER, 12 AWG OR LARGER WHERE CURRENT REQUIREMENTS DICTATE AS PER CEC REQUIREMENTS.
- ALL 24 VDC CONTROL WIRING IS TEW/MTW 300V, 105°C INSULATION, STRANDED COPPER, 16 AWG.
- COMPONENTS ARE LABELED AS SHOWN ON THE DRAWINGS.
- TESTED ALL WIRING AND COMPONENTS FOR FUNCTIONAL OPERATION, CORRECT CONNECTION, CONTINUITY AND INSULATION INTEGRITY. DOCUMENTED ALL TEST RESULTS.
- ALL MAJOR COMPONENTS INSIDE THE PANEL ARE LABELED WITH LAMACOIDS IN ACCORDANCE WITH MAJOR DESCRIPTIONS ON THE DRAWINGS.
- PROVIDED WIRE BARREL FERRULES FOR ALL WIRING.
- ALL TERMINAL BLOCKS ARE NUMBERED AS SHOWN IN THE DRAWINGS, COMPLETE WITH GROUP LABELING.
- ALL WIRES ARE MARKED AS INDICATED ON THE DRAWINGS.

CONSTRUCTION NOTES:

- PROVIDED JUNCTION BOX FOR ASSOCIATED DAMPER ACTUATOR. JUNCTION BOX WAS INSTALLED WITHIN ONE (1) METER OF DAMPER ACTUATOR.

1–0640C–E0025–001	CONNECTION DIAGRAM, CHLORINE GAS SCRUBBER SCBR–C670
1–0640C–E0024–001	CONNECTION DIAGRAM, EXHAUST FAN EF–C642, CHLORINATOR EQUIPMENT ROOM
1–0640C–E0023–001	FIELD WIRING DIAGRAM, SUPPLY FAN SF–C630, CHLORINATOR EQUIPMENT ROOM
1–0640C–E0021–001	FIELD WIRING DIAGRAM, EXHAUST FAN EF–C641, TONNER ROOM
1–0640C–E0020–001	FIELD WIRING DIAGRAM, EXHAUST FAN EF–C640, TONNER ROOM
DRAWING NUMBER	REFERENCE DRAWINGS



					 148 Nature Park Way, Winnipeg, Manitoba Canada R3P 0X7 204-786-8080		ENGINEER'S SEAL		 THE CITY OF WINNIPEG WATER AND WASTE DEPARTMENT						
					DESIGNED BY: V. ELIMBAN				CHECKED BY: V. ELIMBAN		MCPHILLIPS PUMPING STATION				
					DRAWN BY: D. PELLEGRINO				APPROVED BY: V. ELIMBAN						
					SCALE: 1 : 1				ISSUED FOR CONSTRUCTION BY: M. SKINNER						
					DATE: 2023/08/30				DATE: 2025/04/30		PANEL LAYOUT DAMPER ACTUATOR JUNCTION BOXES				
					CONSULTANT NO.:										
00		ISSUED FOR TENDER AND CONSTRUCTION		2025/04/30		VE		VE							
NO.		REVISIONS		DATE		DESIGN		CHECK		CITY DRAWING NUMBER 1-0640M-A0024					
										SHEET 001		REV. 00		SIZE A1	